

Tahapan testing aplikasi dalam LAN client - server

1. Pastikan koneksi di module ke server

```
Imports System.Data.SqlClient
```

```
Module Module1
```

```
Public CONN As SqlConnection  
Public DA As SqlDataAdapter  
Public DS As New DataSet  
Public CMD As SqlCommand  
Public DR As SqlDataReader  
Public STR As String
```

```
Sub koneksi()
```

```
STR = "data  
source=virtual\sqlexpress;initial catalog=dblan;user  
id=sa;password=123"
```

```
CONN = New SqlConnection(STR)
```

```
If CONN.State = ConnectionState.Closed Then  
CONN.Open()
```

```
End If
```

```
End Sub
```

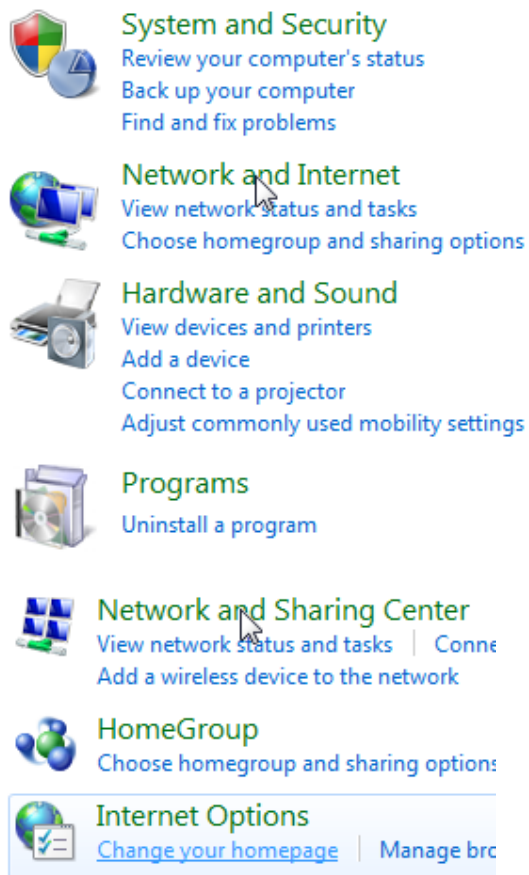
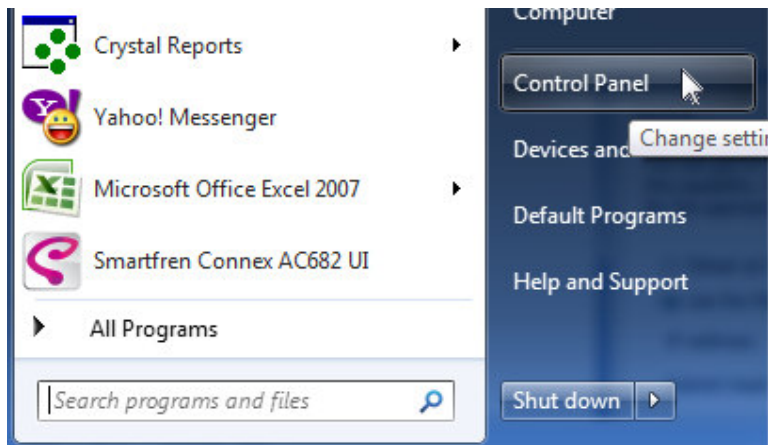
```
End Module
```

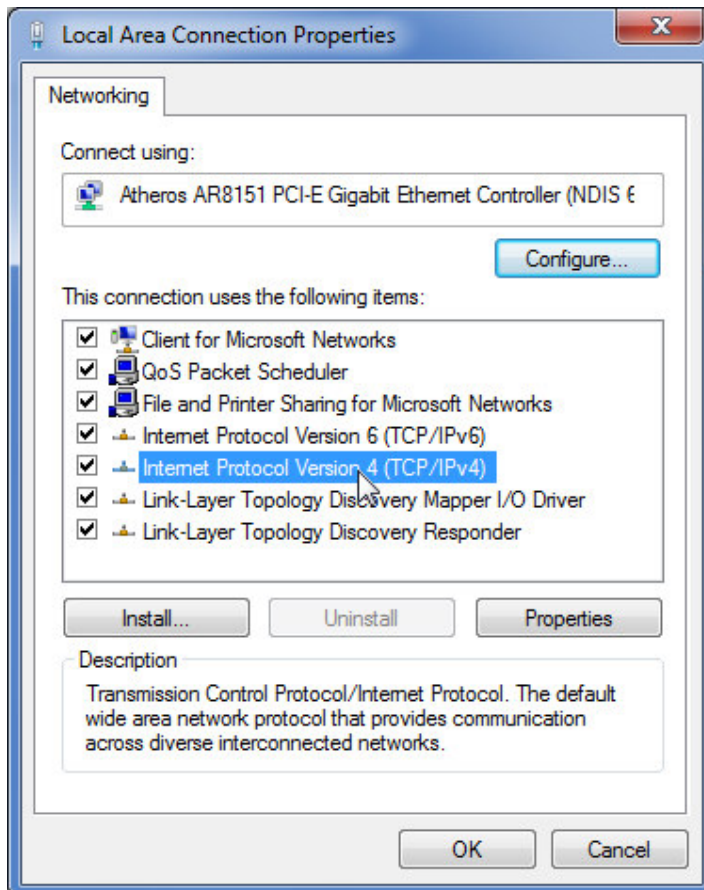
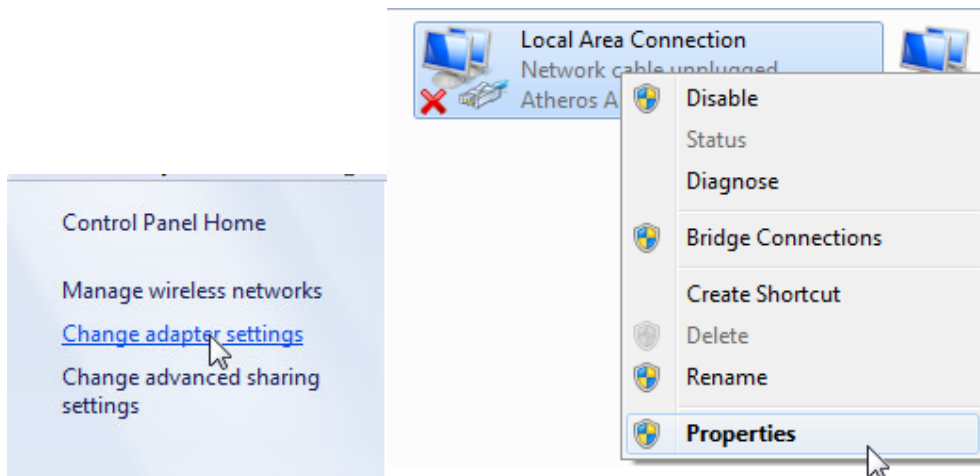
Catatan penting : sql harus ada user id dan password

2. Pastikan kabel LAN sudah terpasang (PTP = cross)
3. Seting workgroup disamakan antara kompi client dengan server (optional)
4. Seting **IP ADDRESS** harus satu segment

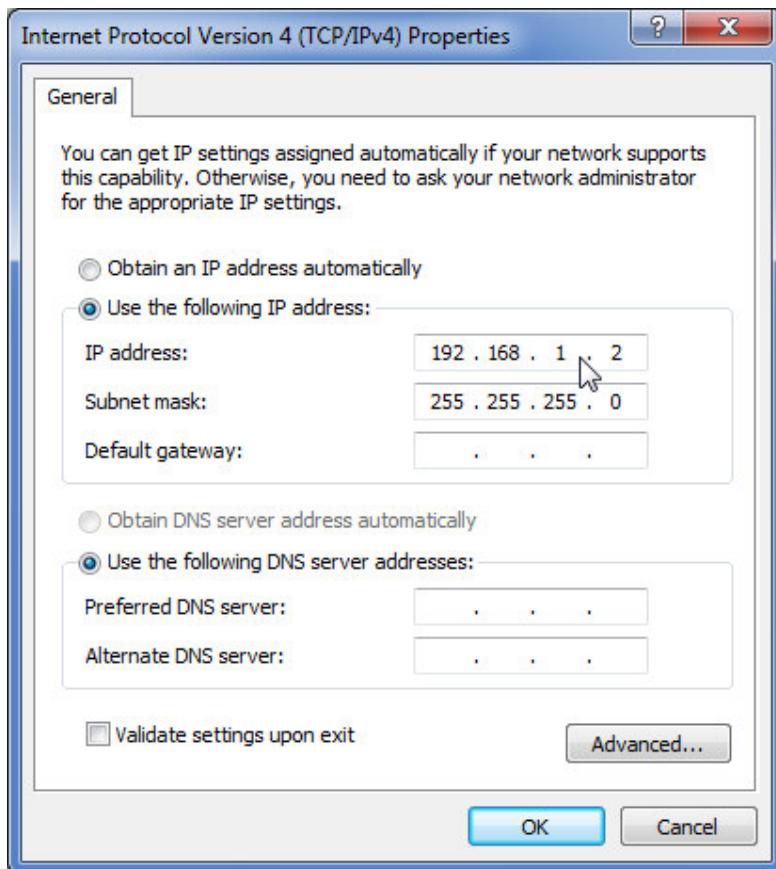
www.konsultasivb.com

Pusat Kursus VB.Net & Bimbingan Tugas Akhir

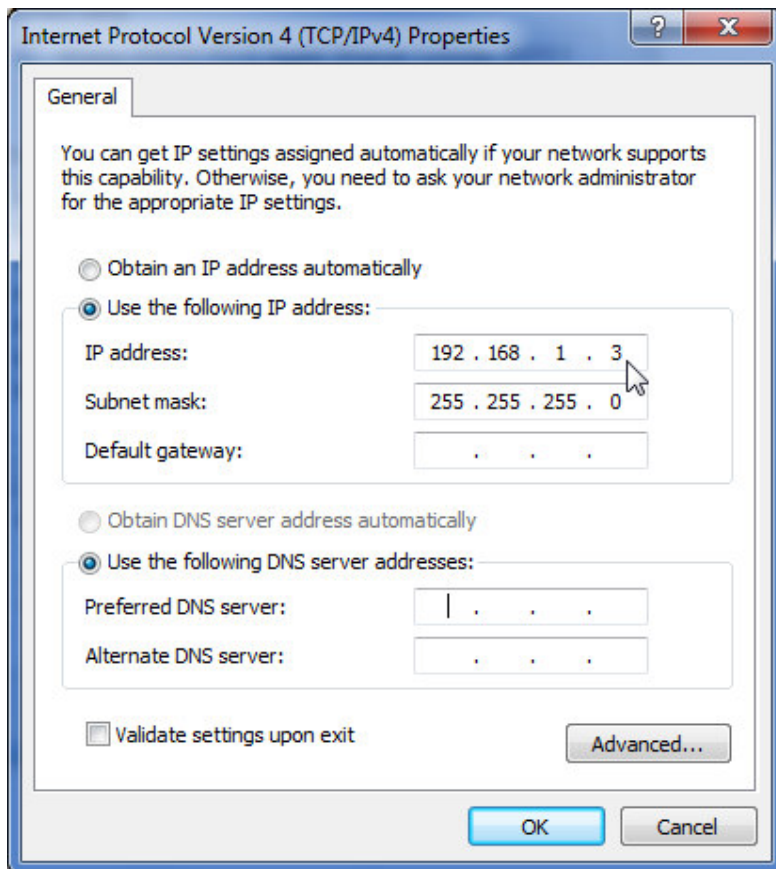




Setting IP address client



Setting IP ADDRESS server



5. Coba lakukan ping dari server ke client dan dari client ke server

```
C:\Windows\system32\cmd.exe
Microsoft Windows [Version 6.1.7601]
Copyright (c) 2009 Microsoft Corporation. All rights reserved.

C:\Users\USER>ping 192.168.1.3

Pinging 192.168.1.3 with 32 bytes of data:
Reply from 192.168.1.3: bytes=32 time=1ms TTL=128
Reply from 192.168.1.3: bytes=32 time=1ms TTL=128
Reply from 192.168.1.3: bytes=32 time=1ms TTL=128
Reply from 192.168.1.3: bytes=32 time=1ms TTL=128

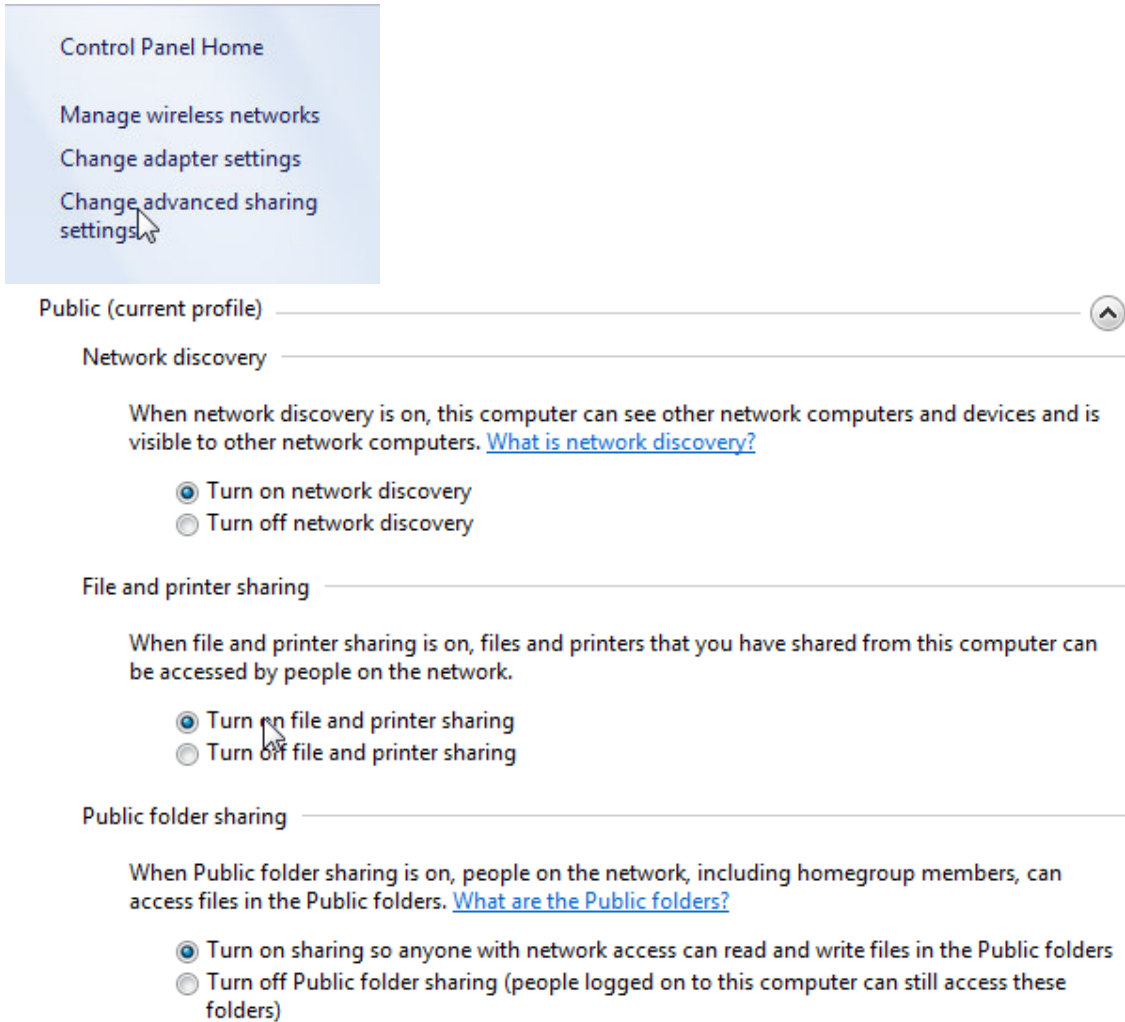
Ping statistics for 192.168.1.3:
    Packets: Sent = 4, Received = 4, Lost = 0 (0% loss),
    Approximate round trip times in milli-seconds:
        Minimum = 1ms, Maximum = 1ms, Average = 1ms

C:\Users\USER>
```

- 6.

Coba RUN program dari client

Jika cara ini tidak berhasil coba lakukan customized sebagai berikut :



The image shows a screenshot of the Windows Control Panel, specifically the Network settings page. A mouse cursor is pointing at the 'Change advanced sharing settings' link in a blue sidebar. The main content area shows three sections: 'Public (current profile)', 'Network discovery', and 'File and printer sharing'. Each section has a description and two radio button options. The 'Turn on' options are selected in all three sections.

Control Panel Home

Manage wireless networks

Change adapter settings

Change advanced sharing settings

Public (current profile)

Network discovery

When network discovery is on, this computer can see other network computers and devices and is visible to other network computers. [What is network discovery?](#)

Turn on network discovery

Turn off network discovery

File and printer sharing

When file and printer sharing is on, files and printers that you have shared from this computer can be accessed by people on the network.

Turn on file and printer sharing

Turn off file and printer sharing

Public folder sharing

When Public folder sharing is on, people on the network, including homegroup members, can access files in the Public folders. [What are the Public folders?](#)

Turn on sharing so anyone with network access can read and write files in the Public folders

Turn off Public folder sharing (people logged on to this computer can still access these folders)

Media streaming

When media streaming is on, people and devices on the network can access pictures, music, and videos on this computer. This computer can also find media on the network.

[Choose media streaming options...](#)

File sharing connections

Windows 7 uses 128-bit encryption to help protect file sharing connections. Some devices don't support 128-bit encryption and must use 40- or 56-bit encryption.

- Use 128-bit encryption to help protect file sharing connections (recommended)
- Enable file sharing for devices that use 40- or 56-bit encryption

Password protected sharing

When password protected sharing is on, only people who have a user account and password on this computer can access shared files, printers attached to this computer, and the Public folders. To give other people access, you must turn off password protected sharing.

- Turn on password protected sharing
- Turn off password protected sharing